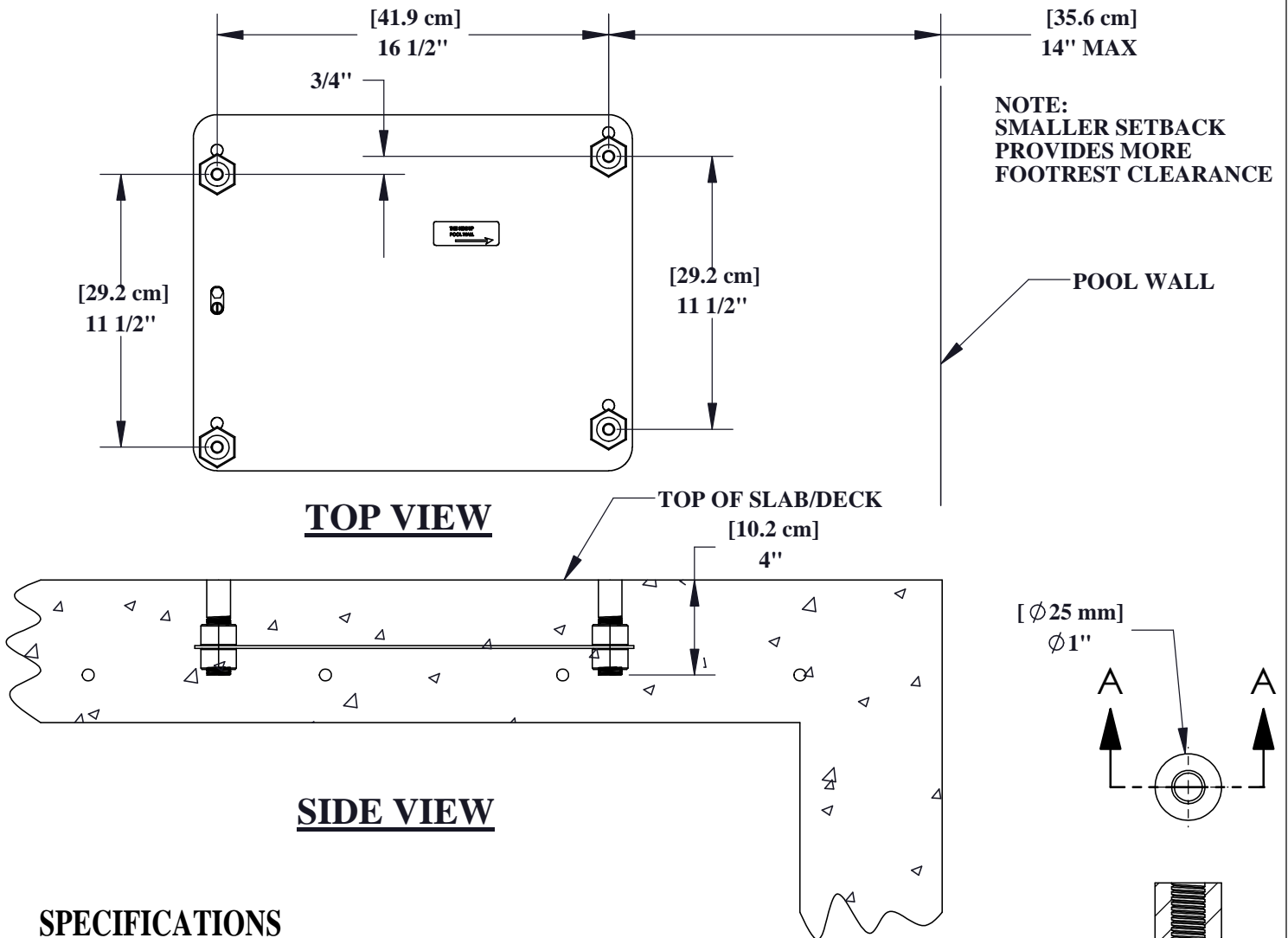


PRO POOL & RANGER LIFT ANCHOR



SPECIFICATIONS

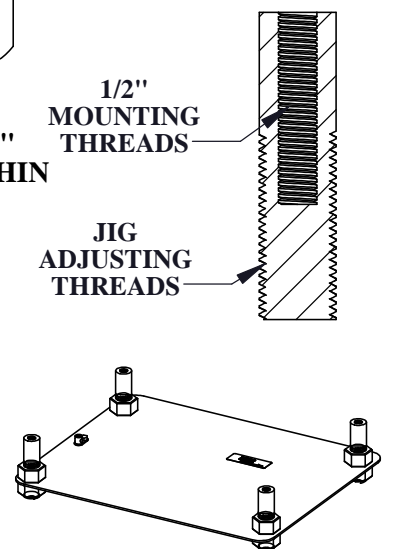
THE AQUA CREEK PRO POOL/RANGER ANCHOR ASSEMBLY SHALL CONSIST OF FOUR (4) 1" [25 mm] ANCHOR SOCKETS MOUNTED IN A 3/16" [5mm] JIG PLATE. THE ANCHOR SOCKETS SHALL BE ADJUSTABLE WITHIN THE JIG PLATE. THE ANCHOR SOCKETS SHALL BE REMOVABLE FOR RETRO-FIT PLACEMENT IN AN EXISTING POOL OR SPA DECK.

MANUFACTURER RECOMMENDS THAT THE ANCHOR ASSEMBLY BE GROUNDED PER LOCAL CODES.

ANCHOR SOCKET: $\phi 1"$ [Ø25 mm] TYPE 304 STAINLESS STEEL

ADJUSTING NUT: 1"-8 HEX NUT - TYPE 304 STAINLESS STEEL

JIG PLATE: 3/16" [4.8 mm] CARBON STEEL PLATE




Aqua Creek Products
The Total Solution for Pool and Spa Access

9889 GARRYMORE LANE
MISSOULA, MT 59808
(406) 549-0769
FAX (406) 549-2602

NOTE:
*SPECIFICATIONS ARE SUBJECT TO CHANGE WITHOUT NOTICE
*ALL DIMENSIONS ARE IN INCHES

PRODUCT:	F-433PP4A	
DWG #:	F-433PP4A-1	
SCALE:	1:6	DATE: 11/24/10
DRAWN BY:	DS	REVISION: G