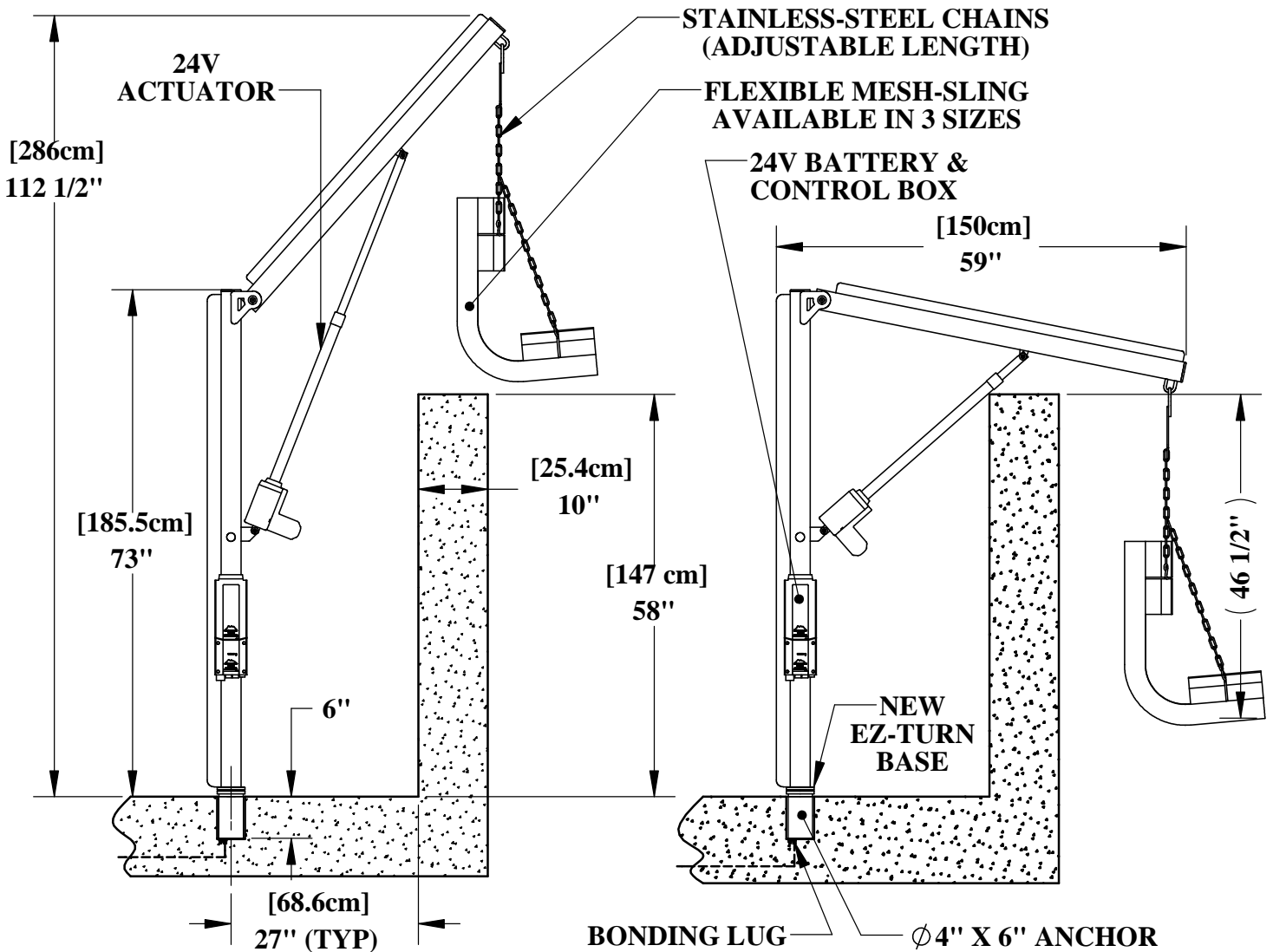


# SUPER POWER-EZ™ LIFT

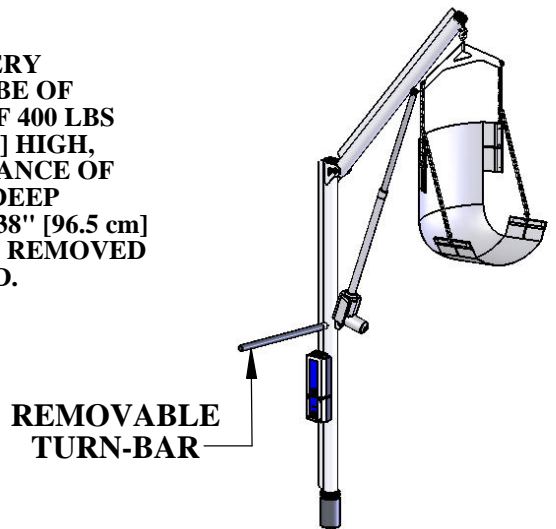


## SPECIFICATIONS:

THE AQUA CREEK SUPER POWER-EZ LIFT SHALL BE A 24V BATTERY POWERED ABOVE-GROUND POOL OR SPA LIFT. THE LIFT SHALL BE OF STAINLESS STEEL CONSTRUCTION WITH A LIFTING CAPACITY OF 400 LBS [181 kg]. THE LIFT SHALL BE CAPABLE OF CLEARING A 58" [147 cm] HIGH, 10" [25 cm] THICK WALL. THE LIFT SHALL HAVE A SETBACK DISTANCE OF 22" TO 28" [56 TO 71 cm]. THE UNIT SHALL INCLUDE A 6" [152 mm] DEEP ANCHOR WITH AN ANTI-TAMPER LID, AND A 20" [51 cm] WIDE BY 38" [96.5 cm] LONG MESH SLING (ADULT). THE UNIT IS PORTABLE AND CAN BE REMOVED WITHOUT TOOLS. A LIMITED LIFETIME WARRANTY IS STANDARD.

### SLING SIZES AND OPTIONS AVAILABLE:

- F-34EZCS: YOUTH, 18" [46 cm] WIDE BY 38" [96.5 cm] LONG
- F-034EZS: ADULT, 20" [51 cm] WIDE BY 38" [96.5 cm] LONG (STANDARD)
- F-037EZS: X-LONG, 20" [51 cm] WIDE BY 50" [127 cm] LONG
- F-360YSLSB: YOUTH SLING W/SEATBELT (18" X 38")
- F-350SLSB: ADULT SLING W/SEATBELT (20" X 38")
- F-036RSS: ADULT SLING W/RIGID SEAT & SEATBELT
- F-0320HSO: HARD-SEAT OPTION



9889 GARRYMORE LANE  
MISSOULA, MT 59808  
(406) 549-0769  
FAX (406) 549-2602

NOTE:  
\*SPECIFICATIONS ARE SUBJECT TO CHANGE WITHOUT NOTICE

PRODUCT:	F-190PHBL	
DWG #:	F-190PHBL-1	
SCALE:	1:24	DATE: 2/16/11
DRAWN BY:	DS	REVISION: C